

Outdoor Wide Band Directional Antenna

PM-AS-OLP-085V11NMJW53-ND

V Pol, 85°

698-960/1710-2700/3400-4000MHz

9.5/10.5/11.0dBi



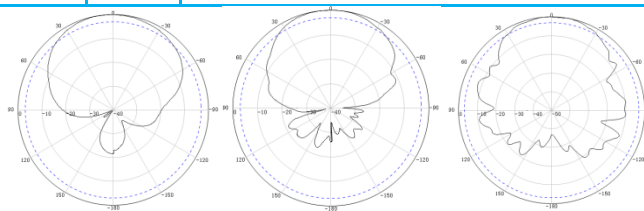
Electrical Specifications

Parameters	Unit	Specifications		
Frequency Range	MHz	698-960	1710-2700	3400-4000
Polarization	deg	Vertical		
Gain	dBi	9.5±1.0	10.5±1.0	11.0±1.0
H-Beamwidth	deg	85±20	65±15	60±15
V-Beamwidth	deg	60±15	55±15	55±15
Front-To-Back Ratio	dB	>13	>18	>13
VSWR		≤1.8		
PIM3 at 2x43 dBm	dBc	-153		
Impedance	Ω	50		
Max. Power per Port	W	50		

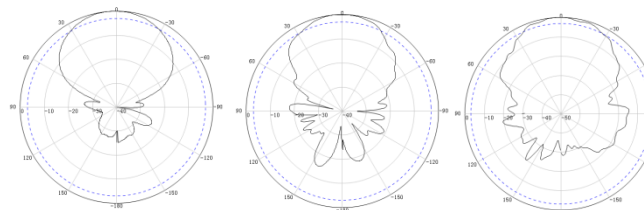
Mechanical Specifications

Parameters	Unit	Specifications
Product Dimension, HxWxD	mm	440x210x65
Product Weight, w/o Mounting Kit	kg	0.55
Diameter of the Mounting Pole	mm	Φ35~Φ50
Radom Material and Color		ABS, White
Connector Type		N-Female
Rated Wind Velocity	km/h	130
Operational Temperature	°C	-40~+55
Operational Humidity	%	<95

H-Plane



V-Plane

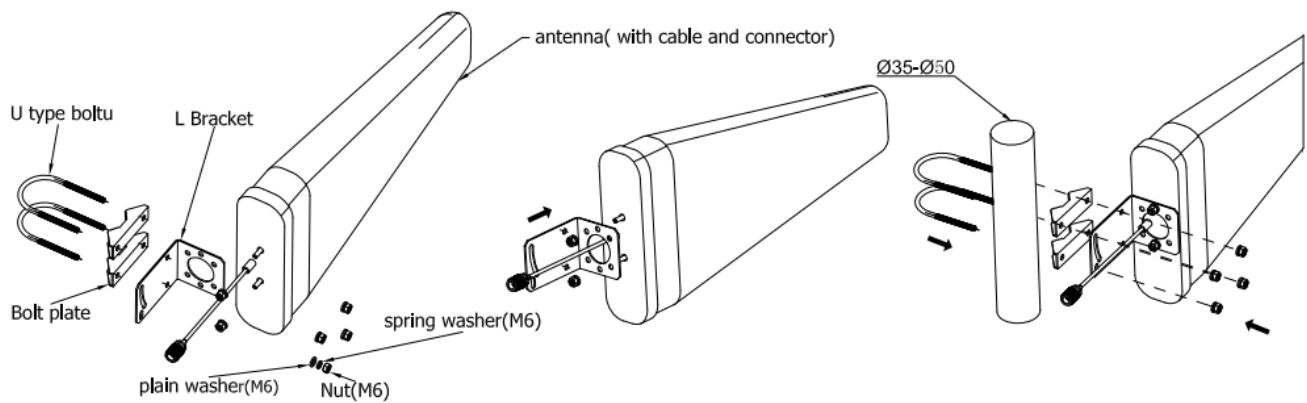


960MHz

1880MHz

4000MHz

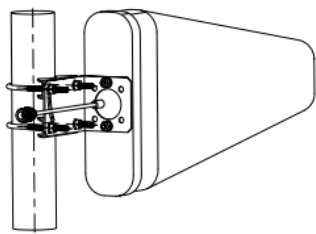
Installation Guide



Step 1: Depends on the packing list, please prepare the materials and available tools.

Step 2: The L clamp is installed on the antenna body with the Nut

Step 3: The U type bolt and bolt plate are fixed on the pole.



Step 4: Install the antenna body which with L clamp on the U type bolt which on the pole, then fix it with nuts.

Packing List	
Description	Qty
Antenna (with cable and connector)	1
L Bracket	1
Bolt Plate	2
U Type Bolt	2
Nut (M6)	6
Plain Washer (M6)	6
Spring Washer (M6)	6